

# Crystal Digital PCR® Assay

## Information Sheet

For Research Use Only. Not for use in diagnostic procedures.

### Product Name

PIK3CA (H1047, H1047L, H1047R) Crystal Digital PCR® Assay (R51014)

### Description

#### Detected Targets

Targets	Sample Type	Detection Channels	Multiplex
PIK3CA H1047, H1047L, H1047R	DNA	Blue/Green/Red	3

The PIK3CA (H1047, H1047L, H1047R) Crystal Digital PCR® Assay is a 10X assay designed to detect and quantify mutations in exon 21 of the PIK3CA gene using the Ruby Chip. PIK3CA is essential for regulating multiple cellular processes through the PI3K/AKT/mTOR signaling pathway including cell growth, proliferation, survival, and metabolism.

#### Assay Configuration

The table below indicates with a “X” which channel(s) are used for each target in the assay:

Targets	Base changes	Blue	Teal	Green	Yellow	Red	Infra-Red	Long-Shift
Wild-type PIK3CA H1047		X						
PIK3CA H1047L	c.3140A>T			X				
PIK3CA H1047R	c.3140A>G					X		

#### Components

PIK3CA (H1047, H1047L, H1047R) Crystal Digital PCR® Assay comprises two reagents: a pool of the assay specific primers and Crystal Flex Probes and a Positive Control. Please refer to the lot specific Certificate of Conformity for characterized concentration, available for download at the Technical Resources section of the Stilla Technologies website.

Component Name	Reference	Concentration	Description
<b>PIK3CA (H1047, H1047L, H1047R) Crystal Digital PCR® Assay</b>	R51014	10X	Detects PIK3CA H1047, the mutations H1047R and H1047L.
<b>PIK3CA Positive Control</b>	R51035.PC0	10X	Contains: hgDNA and synthetic PIK3CA mutants (H1047R, E545K, E542K, N345K, H1047L, E726K, C420R, E453K, Q546R, G118D, E545A)

## Thermocycling Programs

### On the naica® system:

Step		Ramp rate
<b>Step 1</b>	Partition for Ruby Chip	-
<b>Step 2</b>	Temperature 95°C for 180 seconds	1°C/sec
<b>Step 3</b>	Begin Loop for 60 Iterations	-
<b>Step 3.1</b>	Temperature 95°C for 15 seconds	1°C/sec
<b>Step 3.2</b>	Temperature 58°C for 30 seconds	1°C/sec
<b>Step 4</b>	Release for Ruby Chip	-

### On the Nio™ Digital PCR:

Step		Ramp rate
<b>Step 1</b>	Partition for Ruby Chip	-
<b>Step 2</b>	Temperature 95°C for 180 seconds	1°C/sec
<b>Step 3</b>	Begin Loop for 60 Iterations	-
<b>Step 3.1</b>	Temperature 95°C for 15 seconds	2°C/sec
<b>Step 3.2</b>	Temperature 60°C for 30 seconds	2°C/sec
<b>Step 4</b>	Temperature 58°C for 300 seconds	1°C/sec
<b>Step 5</b>	Release for Ruby Chip	-

## Image Acquisition

Download the dedicated scanning file from the Technical Resources section of the Stilla Technologies website:

- ScanningTemplate\_Prism3\_PIK3CA\_R51014.ncx (3-color naica® system)
- ScanningTemplate\_Prism6\_PIK3CA\_R51014.ncx (6-color naica® system)
- NioProtocol\_3C-60X-60°C-30s.nioprotocol (Nio™ Digital PCR)
- NioAssay\_3C\_PIK3CA\_R51014.nioassay (Nio™ Digital PCR)

## Image Analysis

The following files are embedded in the dedicated scanning files listed above:

- MeanCompMatrix\_Prism3\_PIK3CA\_R51014.ncm (3-color naica® system)
- UniversalCompMatrix\_3C\_Prism6-Nio.ncm (6-color naica® system, Nio™ Digital PCR)
- AnalysisConfiguration\_PIK3CA\_R51014.nca (all systems)

## Consumables Required but Not Provided

- Ruby Chip (C16011)
- naica® PCR MIX 10X (R10106)
- Universal Reporters 3 (R41401 200 reactions, R41402 1000 reactions)
- Nuclease-free water

## Instruction for PCR Mix Preparation

Specific instructions for preparing the PCR mix are given below.

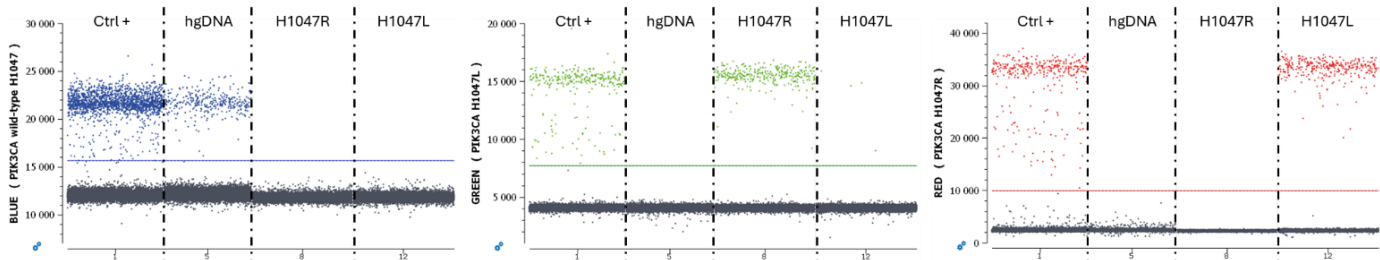
Reagent Name	Initial Concentration	Final Concentration	Volume per reaction (µL)
naica® PCR MIX Buffer A <span style="color: green;">●</span>	10x	1x	0.60
naica® PCR MIX Buffer B <span style="color: red;">●</span>	100%	4%	0.24
Crystal Digital PCR® Assay <span style="color: orange;">●</span>	10x	1x	0.60
Crystal Universal Reporter Tube A <span style="color: yellow;">●</span>	40x	1x	0.15
Nuclease-free water	NA	NA	Variable
<b>Template DNA</b>	<b>NA</b>	<b>NA</b>	<b>Variable</b>
<i>or Positive Control</i> <span style="color: grey;">○</span>	10x	1x	0.60
<i>Total reaction volume (µL)</i>			<b>6.0</b>

## Representative Data and Instructions for Analysis

Set thresholds for separating positive and negative populations on the 1D plots. To optimize the analysis, the thresholds should be set at approximately equal distance from the positive and negative clusters. Examples of results obtained on the 3-color naica® system are given below.

Remark: The threshold can be adjusted on each individual chamber to optimize its placement.

Wet lab testing was carried out using genomic hgDNA as a negative control and a positive control consisting of hgDNA and 11 synthetic PIK3CA mutants (H1047R, E545K, E542K, N345K, H1047L, E726K, C420R, E453K, Q546R, G118D, E545A). Synthetic PIK3CA mutants were also tested individually (H1047R, H1047L).



**Figure 1: 1D plots obtained during wet lab testing on the 3-color naica® system. The thresholds are set at approximately equal distance from the positive and negative clusters.**



Stilla Technologies

F-94800 Villejuif, FRANCE

Registered names and trademarks used in this document, even when not specifically marked, are not to be considered unprotected by law.